

easy climbing to the summit. The rock is of the same quality as that in the Cirque of the Towers. (5 pitches, II, 5.10)

WILLIAM ALEXANDER, *Unaffiliated*

*Mount Mitchell, Northwest Face, Cirque of the Towers, Wind River Range.* Molly Higgins and I made this climb, starting on the far right side of the north-west face. It is easily identified by a slab that leads to a straight one-inch crack in a right-facing corner for the first part and left-facing for the upper part. This was followed by "Flora Corner," which led to the top. Four pitches; II, 5.10.

LARRY BRUCE

*Lankin Dome, Granite Mountains.* Some rather nice granite domes lie in the Wyoming desert. Eric Boelke, Andy Archer and I climbed a route on the north-west buttress of Lankin Dome in August. The first pitch, the crux, is up a friction slab (one bolt for protection), heading toward a prominent crack and dihedral system. We followed these for four more pitches to where we could scramble to the top. (III, 5.9)

DAVID KOZAK

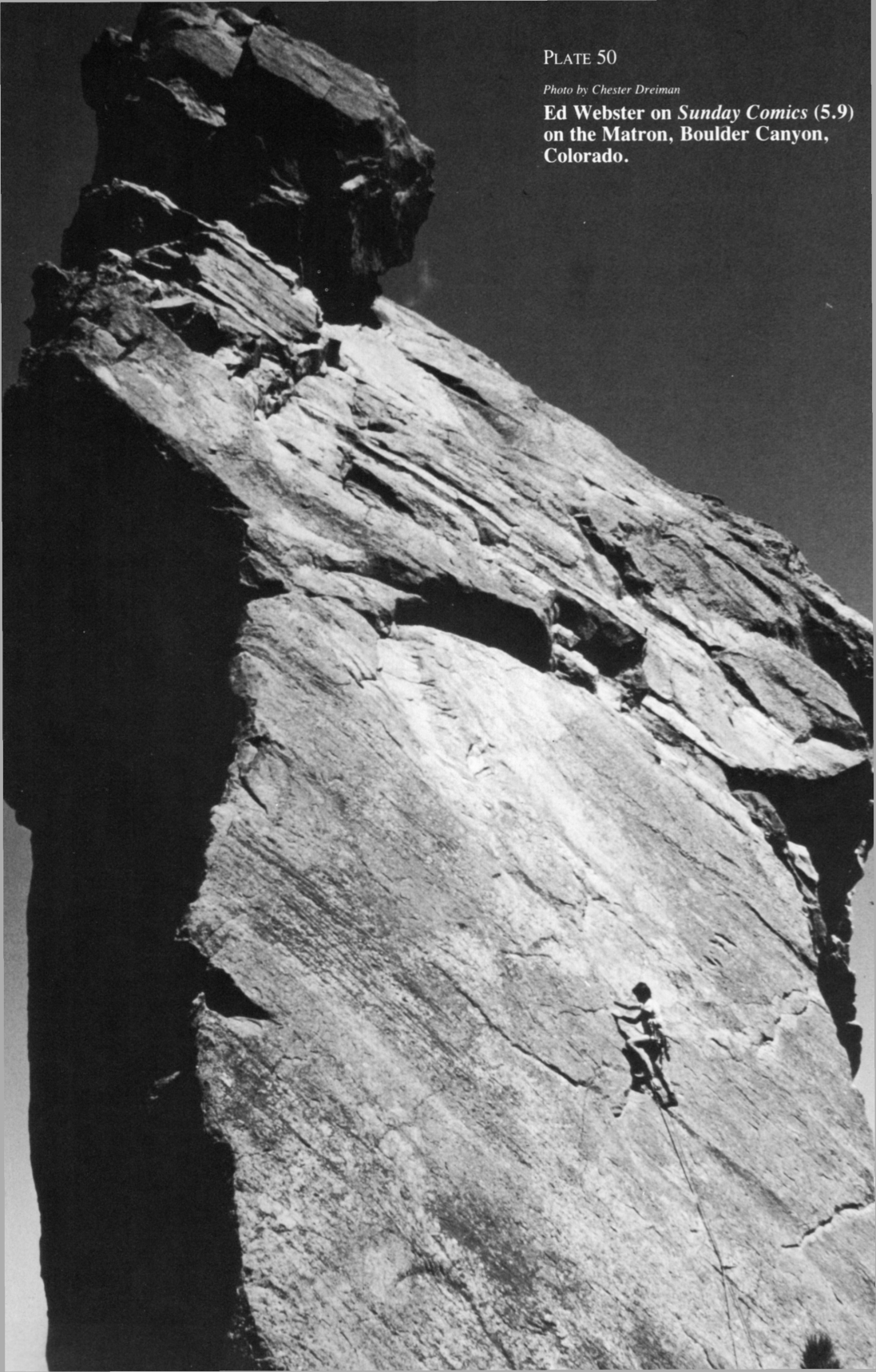
## Colorado

*Black Canyon of the Gunnison.* Many new free climbs have been made in the Black Canyon of the Gunnison. Most are on a slightly smaller scale than other recent free climbs, but these newer climbs are just as or more desirable since they can easily be done in one day from the canyon rim without the usual fear of a forced bivouac. On North Chasm View wall, both crack systems just to the left of the popular *Leisure Climb* have now been done. *Musical Partners* (III, 5.9), the left-hand of these three cracks, was first climbed by Paul Scannell and me and features a poorly protected bomb-bay chimney on the crux. *All's Well That Ends Well* (III, 5.11 -) is a completely different story and is highly recommended. Lauren Husted and I made the first ascent of the central crack system when it was slightly damp and used several points of aid. These were eliminated a month later by Chester Dreiman and me, and the route was soon repeated by Peter Gallagher and Robert Warren, who confirmed its quality. Down in SOB Gully, *Escape Artist* (III, 5.9 + or 5.11) has received a multitude of repeats, with most of the parties wisely avoiding the original crux, a strenuous lightning bolt crack up a 95° wall. Next to the right, Dreiman and I made an excellent companion route, *Comic Relief* (III, 5.10 -), which sports one of the best 5.9 finger-and-hand cracks and merges with its neighbor after six leads. Just right of *Russian Arête*, Bob Robertson and Art Wiggins established a new eight-pitch route, well protected and on good rock, *Ghost Arête* (III, 5.10). Just upstream

PLATE 50

*Photo by Chester Dreiman*

**Ed Webster on *Sunday Comics* (5.9)  
on the Matron, Boulder Canyon,  
Colorado.**



from Newberry's Slabs, Greg Grant and I discovered a new 13-pitch route up a previously unclimbed buttress. We named it *Quest for Fire* (IV, 5.11 - ) in light of our miserably cold bivouac atop the tenth pitch and our futile, stone-age efforts to start a fire to stay warm. Besides underestimating the length of the route, we forgot to pack any matches! Several noteworthy repeats were also done. Randy Leavitt and Rob Slater did the second free ascent of *Stratosfear* (VI, 5.11), the free ascent of the Forrest-Walker route on the Painted Wall. Earl Wiggins and Bob Rotert bagged the second ascent of the *Checkerboard Wall*, which they termed a "route of the future," and later on Wiggins and Mike O'Donald made their own futuristic contribution, the 2-in-1 combination, racing up two Grade V routes on North Chasm Wall, the *Goss-Logan* (V, 5.11) and the *Scenic Cruise* (V, 5.10+) in one extremely long and tiring day! Encountering over 3500 feet of arduous free climbing, the pair completed the two climbs by leading on a single 300-foot 9mm rope to save as much time as possible.

EDWARD WEBSTER

*"Remnant Tower," Colorado National Monument.* This small spire guards the entrance to Lizard Canyon and the north entrance. It is just south of P 4715. In May Walt Kuentzel and I made the first free ascent and the second overall ascent. It was first done by Layton Kor, Harvey Carter and John Auld in 1963. The initial A3 overhang goes free at 5.9 and the remainder is well protected chimneying on good rock (II, 5.9).

DAVID KOZAK

*Sheep Rock, Main Dome, South Platte Area.* The obvious thin crack on this beautiful dome previously had been an aid route (III, 5.8, A2). Steve Spaar, Don Cardinale and I, in May of 1982, freed the sustained second pitch at 5.11. We named it *Charley Don't Surf*. While doing the climb, I noticed a possible line of water grooves and thin cracks to the right. In August, 1983 Eric Boelke and I took three days to establish another very fine route we called *The Divine Ms. M* (III, 5.10a). It is well protected. It starts with *Charley Don't Surf* and then heads right.

DAVID KOZAK

*Flatirons.* In the Flatirons above Boulder, Chester Dreiman and I made the first ascent of a tremendous overhang on the west face of Like Heaven Rock, which we named *For Your Arms Only*. We two also completed a new direct finish to Jeff Lowe's route, *Sunday Comics*, on the west face of the Matron (5.9). Previously unprotected, with groundfall potential, bolts were placed by two subsequent ascents, making the climb an enjoyable and much safer venture.

EDWARD WEBSTER