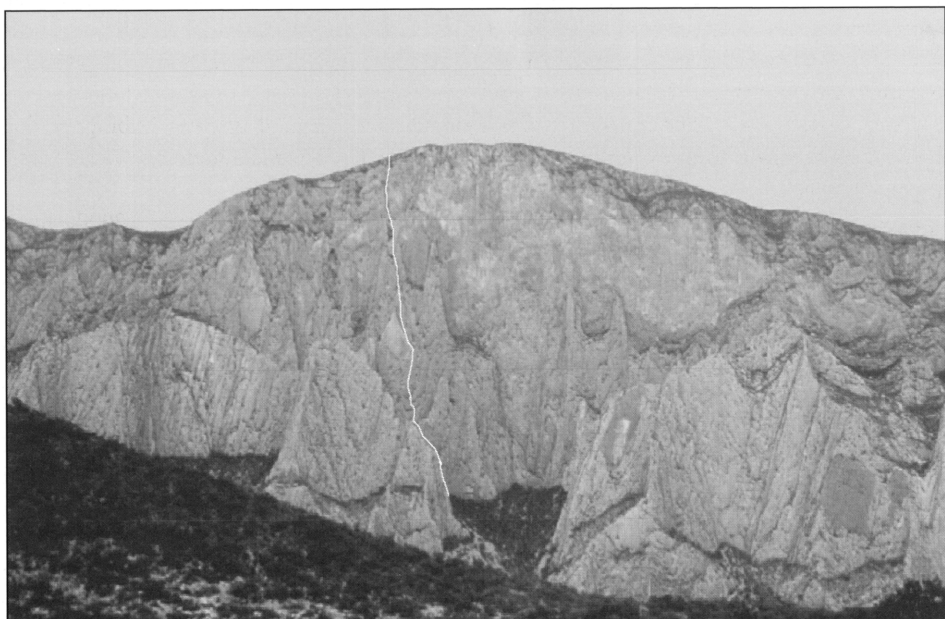


In November (2001) I was drawn back by a strong attraction to the desert and especially to a massif of granite rock that rises between hills, spiny bushes, orange colored blocks of granite, and a night sky teeming with thousands of stars. This is the place to live a good adventure. This time I was accompanied by James Scarse, an American climber interested in getting to know the area and opening a new free route. We spent two days on the wall climbing some exceptional pitches with a few bolts and fascinating rock features. We made the first ascent of Lluvia de Estrellas (Rain of Stars) (300 meters, V A1 5.12+). In the Piedra Partida campground, where there is an enormous boulder perfectly split in two, waited some friends from Torreón, Monterrey, México (City), South Africa, and Switzerland. It's a magical place.

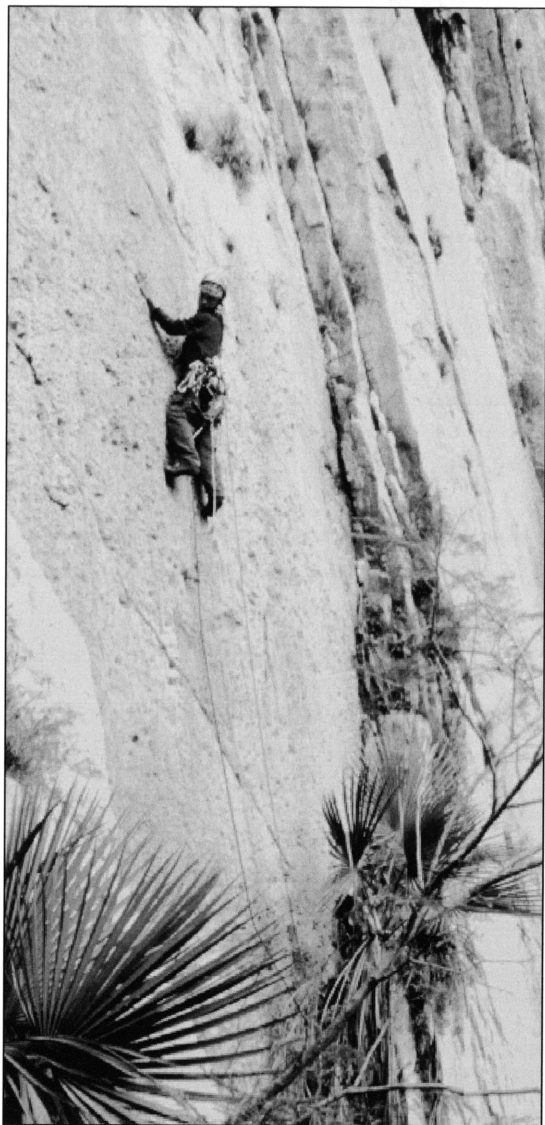
LUIS CARLOS GARCÍA AYALA, *Mexico*

*Tatewarí, Cola de Venado.* The Cumbres de Monterrey “la Huasteca” National Park (la Huasteca refers to the region around the Gulf of México) is located in the metropolitan area of the city of Santa Catarina in the state of Nuevo León. Once in the park you have to follow the paved road (3 km) until it turns to gravel. Once on the gravel road follow a sign on the ground that says “Virikuta.” This road enters another canyon that leads to the ranch of Don Simón Loera Correa. This Señor Simón is the rural Judge and it is important to let him know the length of your stay in the area.

The canyon is surrounded by a great massif of limestone rock that reaches over 500 meters in height. The area possesses vast potential for multi-pitch climbing and is only 20 minutes from the city of Santa Catarina. On the rock wall Tatewarí (Grandfather Fire), 550 meters tall, is the first route. Because it is a desert zone the best months to climb are October until April, the others being very hot. It is advisable to arrive with all of your food, water, and fuel when entering the park.



The Cola de Venado route on Tatewarí in La Huasteca National Park. *Luis Carlos Garcia Ayala*



On the first ascent of Cola de Venado, Tatwari. Carlos García

Last October I was invited to get to know the canyon. I returned in December with Francisco Trad to equip and do the first ascent of Cola de Venado (Stag's Tail) (550 meters, V 5.12d). The ascent was done from the ground up, placing bolts from hooks. The work took us five days of climbing and staying on the wall. There are 10 pitches of 55 meters each and 115 bolts on excellent, featured limestone. Rap the route to descend.

After the first attempt we left the route equipped and returned to México City. Last March I returned to free the route and confirm its rating. This time Rodney Blackmore, from the U.S., and I simulclimbed the route without falls in a total of five hours, greatly enjoying the climbing. From the summit the landscape is spectacular and you can see three enormous virgin walls awaiting their first route. There are two other areas of the park for sport climbing in the zone of Guitarritas and various others around la Huasteca. There is enormous potential for further climbing in the area.

LUIS CARLOS GARCÍA AYALA, *Mexico*

*Iztaccihuatl, El Orgasmo del Cerdo and Oz. El Orgasmo del Cerdo is more than 700 meters high, but only 300 meters are technical, with 200 meters of scrambling and occasional 20-meter fourth-class steps. It rises from*

the west glacier and was opened by Leonardo Torres, Gustavo Montalvo, and me in April. We climbed the route unroped, in less than five hours, because we found no way to safely use the rope we were carrying. You start at 4,500m on a 70-meter water-ice fall, with a 60-degree-ramp in the middle (WI3). You continue up a rocky ridge for another 300 meters, encountering fourth-class on two 20-meter steps. You then gain the base of a 40-meter icefall that is WI3. Once past the icefall, you ascend 80 meters of mixed terrain, which averages 50 degrees but is easy; pass more fourth-class terrain; and end on a 35-meter high serac, which may be AI3 or AI4, as it has 25 feet of vertical ice. From here to the summit is 120 meters of easy, though crevassed, terrain.