



Smaug Peak, showing line of first ascent. Photo taken in dry conditions during a previous reconnaissance; at time of first ascent, snow covered scree-filled cwm. *Mike Dobie*

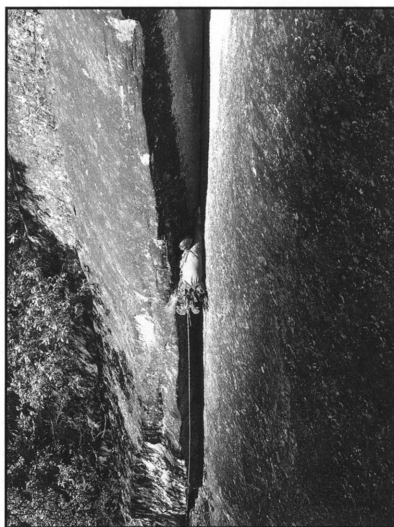
to a prominent horse trail/road, toward woods on the southeastern slope of the mountain. One trail seemed most obvious, and we passed a few horse stalls (used for tourism) and buildings. We went off-trail at 3,350m and headed straight up grassy slopes to an alpine basin, where we established base camp at 4,235m in a cirque below the summit.

The following morning we climbed snow-covered scree to a gully facing southeast. After entering the gully we headed up left, reaching more gully systems leading to the summit (south) ridge. We met high winds and a developing storm as we ascended a 4th class block at the top. Our route, on which we found no evidence of previous passage, gave snow and ice climbing to 50° and class 3 and 4 rock steps. We downclimbed our ascent route. From the top it looked as though there might be other gully systems giving access to the summits farther north, between us and Shanzidou.

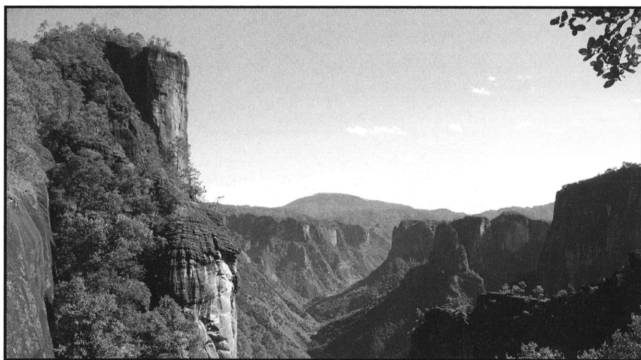
MIKE DOBIE, China

LOAJUNSHAN NATIONAL PARK,

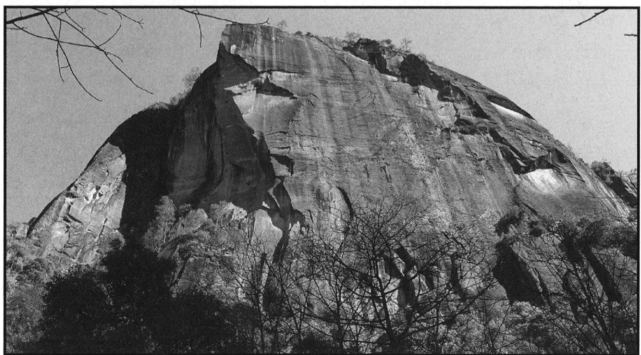
Rock climbing. Austin and Laoiju Stringham have opened a sandstone trad climbing area in northwest Yunnan Province. Accessed through the town of Liming (2,100m), two and a half hours drive west of the major city Lijiang, the sandstone walls lie within Loajunshan National Park in the Three Gorges scenic region. The pair worked



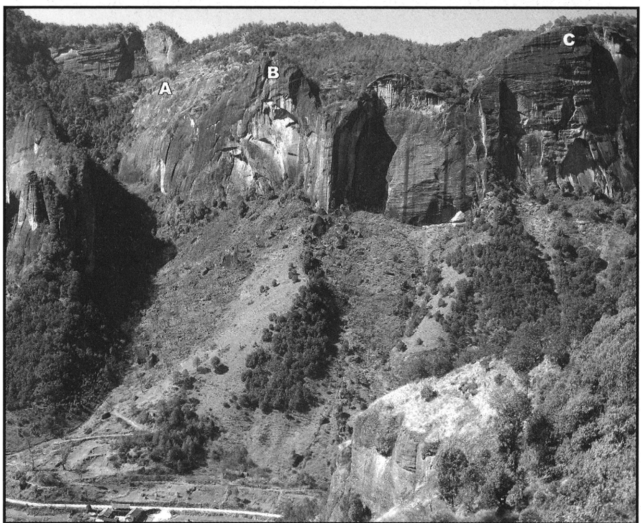
Eben Farnworth on first ascent of Dancing with Dragons (FFA by Darryl Kralovic, 5.10d), Lisu East Buttress. *Darryl Kralovic*



Sandstone walls in Liming Valley. *Darryl Kralovic*



Lisu area, East Butress. Established climbs are on left side and on pillars at base of front face. *Darryl Kralovic*



Liming Valley. (A) Orange Sky area, home to classic Orange Sky (37m, 5.11 A0), one of park's best 5.11s. (B) Cretaceous area, first sector to be climbed in Liming and home to classic Soul's Awakening (four pitches, 5.10). (C) Cave area, which currently has few established routes but loads of potential. *Mike Dobie*

tirelessly to gain access for rock climbers, which was eventually granted by the Chinese Government in November 2010.

Since then Austin, Eben Farnworth, Darryl Kralovic, and I have put up 50 new routes, documented in the guidebook *Liming Rock*. The potential for routes is almost limitless; sandstone cliffs up to 200m high lie throughout 10 major valleys, and the region is best described as offering a variety of crack climbing in the style of Utah's Indian Creek.

The guidebook documents approaches, potential new route information, and attractions and accommodations in the area. It can be downloaded free at junshanclimber.com. For more information you can also contact me directly.

Because the local government can now see possible financial benefits, it is totally enthusiastic about climbing development. This good news means that the park could become an example to the rest of China, opening government eyes to this type of outdoor recreation.

MIKE DOBIE, *China*,
mdobie012@gmail.com